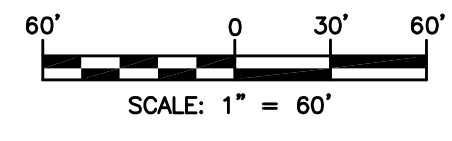


S 89°11'28" E 1717.53'

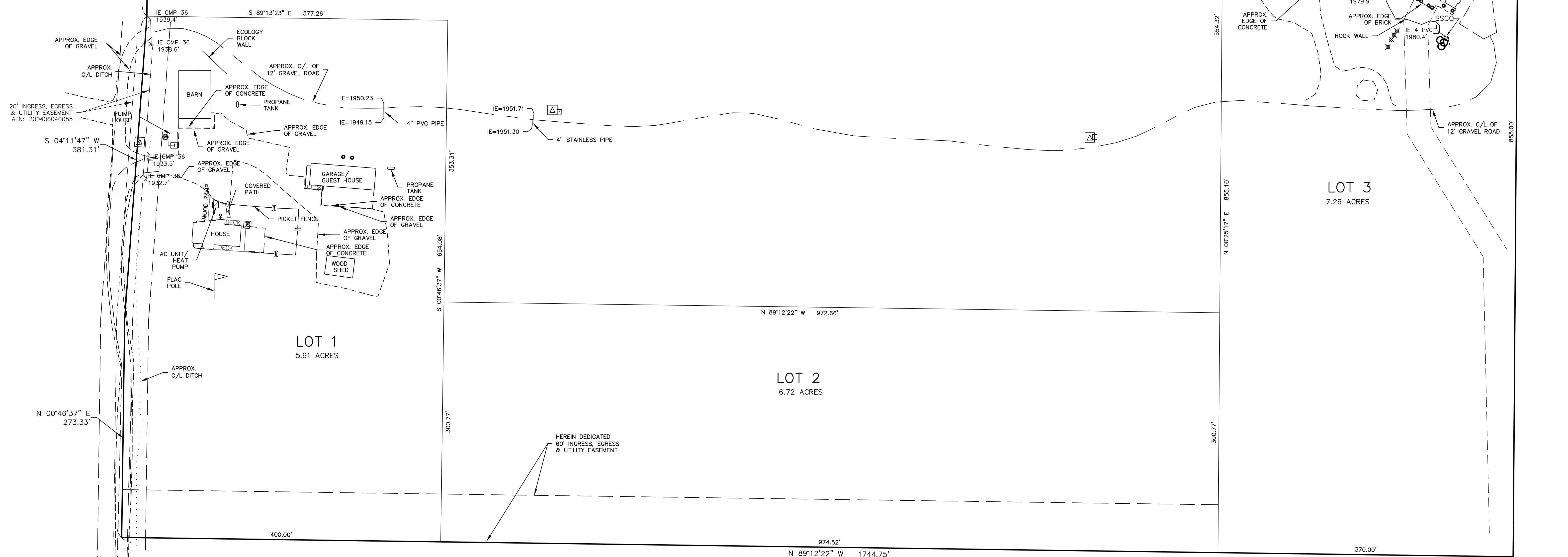
LEGEND

- ⊙ FROST FREE HYDRANT
- ⊙ WELL
- ⊠ WATER METER
- ⊠ WATER VALVE
- ⊠ SPRINKLER
- SSCO SANITARY SEWER CLEAN OUT
- SEPTIC LID
- △ ELEC. TRANSFORMER
- POWER METER
- ⊠ HEAT PUMP
- TELEPHONE PEDESTAL
- POST



LOT 4
30.09 ACRES

Well location



EASEMENT TO BE AMENDED TO REFLECT AS-BUILT LOCATION

20' INGRESS, EGRESS & UTILITY EASEMENT
AFN: 200406040055

HEREIN DEDICATED
60' INGRESS, EGRESS
& UTILITY EASEMENT

N 00°25'25" E 607.32'

S 89°13'23" E 377.26'

S 04°11'47" W 381.31'

N 00°46'37" E 273.33'

LOT 1
5.91 ACRES

LOT 2
6.72 ACRES

LOT 3
7.26 ACRES

400.00'

N 89°12'22" W 972.66'

N 89°12'22" W 1744.75'

370.00'

N 00°25'17" E 855.10'

554.32'

S 00°25'17" W 1260.59'

APPROX. EDGE OF PAVEMENT

855.00'

405.59'

N 89°11'28" W 370.00'

APPROX. C/L OF 12" GRAVEL ROAD